



# GAT MONTHLY MEMBERSHIP PROGRESS REPORT

Results as of: 5/31/2022

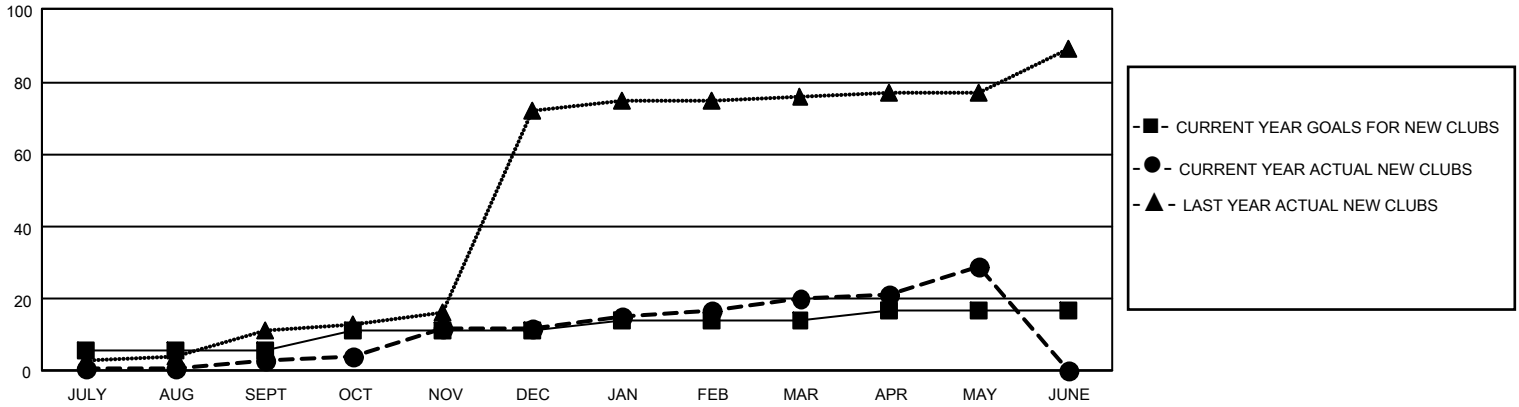
## GMT Constitutional Area 6, Group F

REPORT DOES NOT INCLUDE CLUBS IN UNDISTRICTED AREAS.

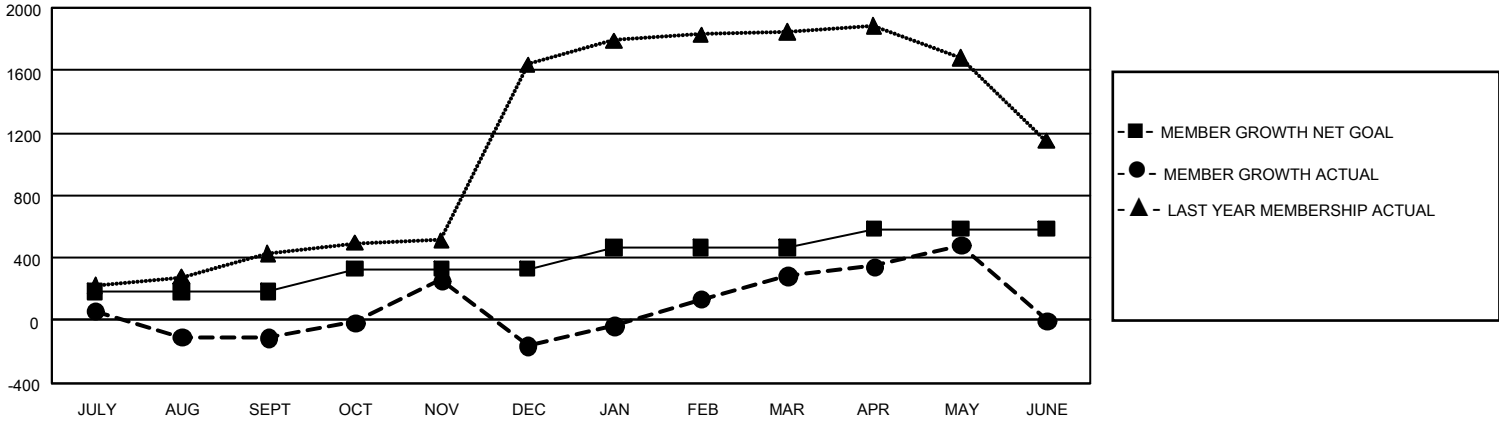
Clubs			
RESULTS FOR 2021-2022			
QUARTER	NEW CLUB GOAL	NEW CLUBS	DROPPED CLUBS
JULY/AUG/SEPT	18	3	23
OCT/NOV/DEC	15	9	14
JAN/FEB/MAR	9	8	7
APR/MAY/JUNE	9	9	2

Members			
RESULTS FOR 2021-2022			
QUARTER	MEMBER GROWTH NET GOAL	MEMBER GROWTH ACTUAL	DROPPED MEMBERS ACTUAL (including transfers)
JULY/AUG/SEPT	185	434	504
OCT/NOV/DEC	145	705	753
JAN/FEB/MAR	135	624	124
APR/MAY/JUNE	120	437	230

GOALS AND ACTUAL NEW CLUBS CUMULATIVE



GOALS AND ACTUAL MEMBERS CUMULATIVE



<b>DROPPED CLUBS: 46</b>	230 CLUBS OF 514 ADDED 1 OR MORE NEW MEMBERS	<b>GENDER DISTRIBUTION</b>	
		MALE 11,402 (78.73%) FEMALE 3,074 (21.22%) NON BINARY 0 (0.00%) PREFER NOT TO ANSWER 7 (0.05%)	
<b>DROPPED MEMBERS</b>		<a href="#">CLICK HERE FOR CUMULATIVE MEMBERSHIP DATA</a>	TOTAL FAMILY UNIT MEMBERS 5,664
DECEASED 68 CLUB CANCELLED 499 OTHER 1,044 <b>TOTAL 1,611</b>			FAMILY MEMBERS PAYING HALF DUES 3,619